

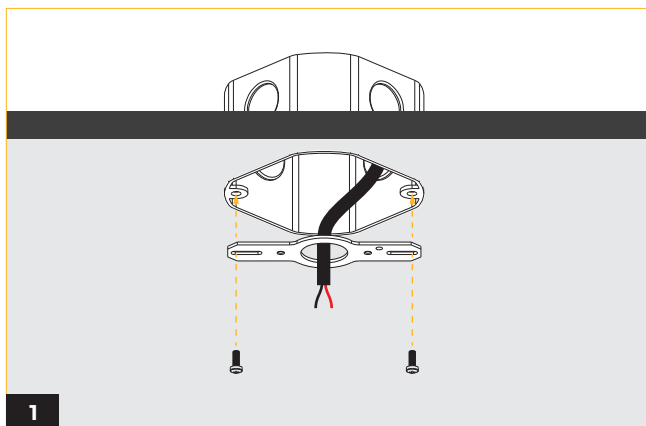
IMPORTANT SAFETY INFORMATION

READ AND FOLLOW ALL SAFETY INSTRUCTIONS

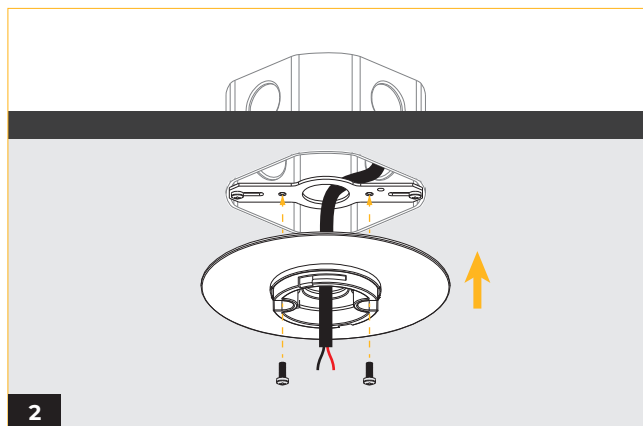
**FOR FIELD ASSISTANCE PLEASE CALL
+1-213-255-2060 #4**

- Before wiring to power supply and during servicing or relamping, turn off power at fuse or circuit breaker.
- All servicing or relamping must be performed by qualified service personnel.
- Product must be grounded to avoid potential electric shock or other potential hazard.
- Product must be installed at locations and heights, in a manner consistent with its intended use, and in compliance with electrical code and local codes.

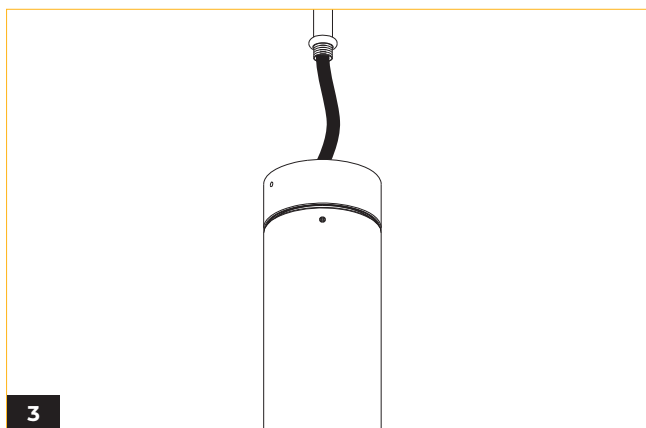
SAVE THESE INSTRUCTIONS FOR FUTURE REFERENCE



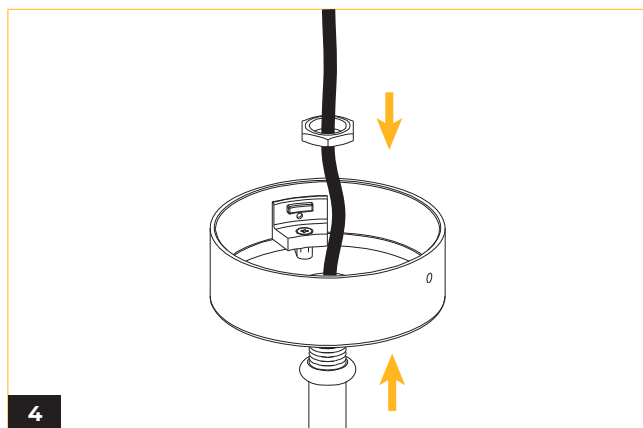
1
Secure the crossbar to junction box (by others), using two phillips screws.



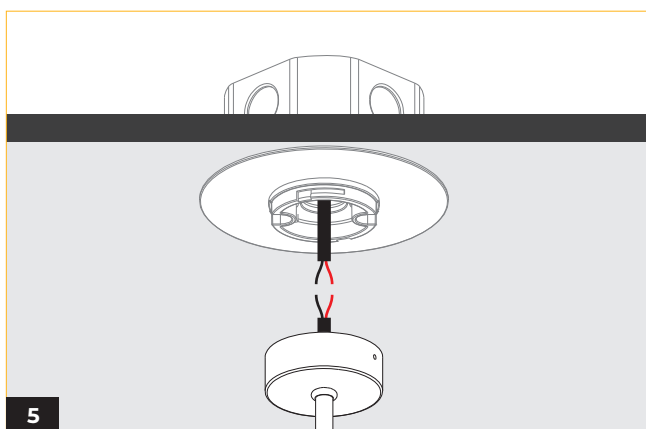
2
Screw the stem adjustable mount plate onto the bracket in the two holes indicated.



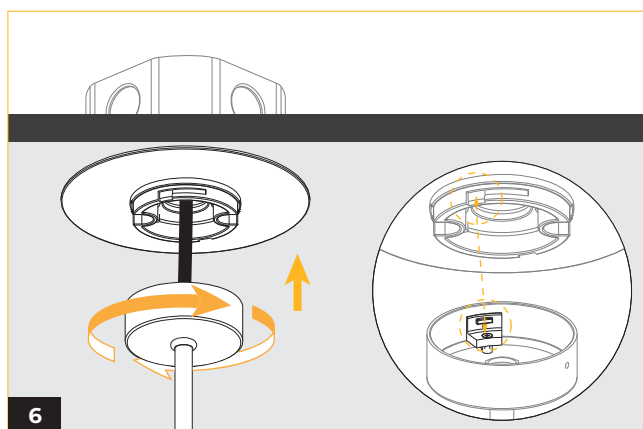
3
Thread luminaire wiring through stem mount.



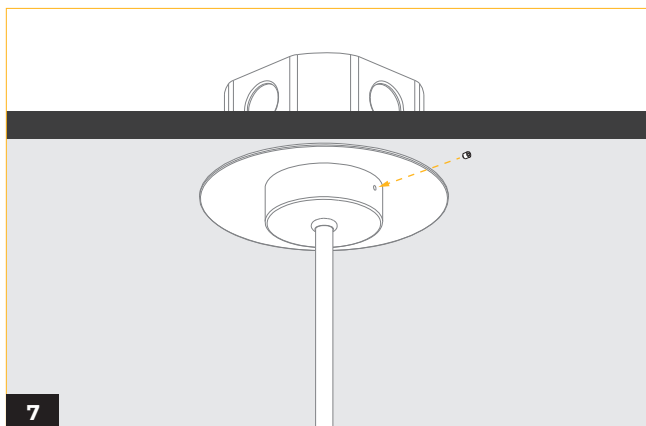
4
Fasten stem mount canopy and fasten in place using hex nut.



5
Make electrical connections between junction box and luminaire. Refer to the wiring diagram for a more etailed explanation.



6
Raise and align the stem mount canopy to the plate by matching the U-shaped openings.

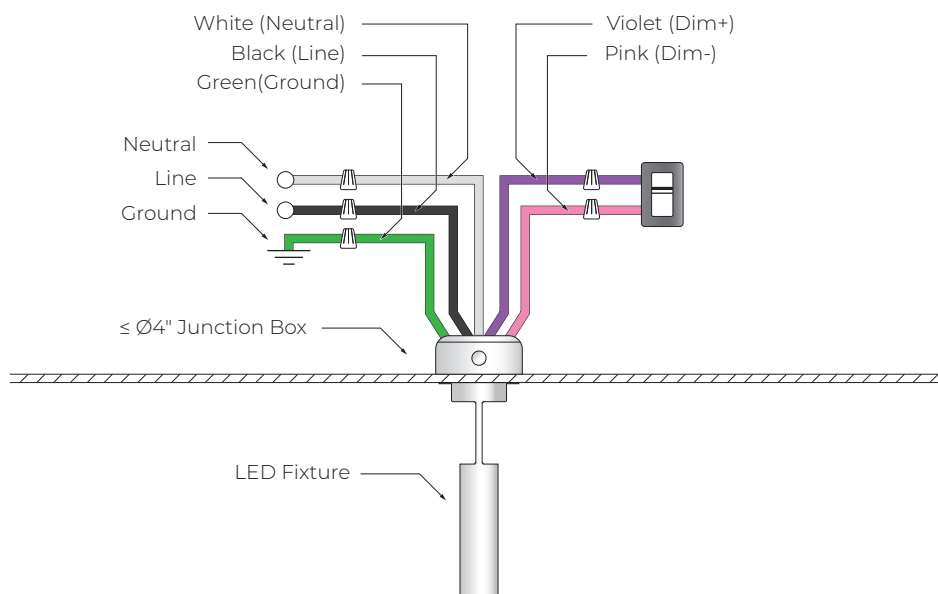


Secure fixture with hex screw.

WIRING DIAGRAM

0-10V / Superior 0-10V

*Not to Scale



TRC

*Not to Scale

