

# LANCE 4

## ARCHITECTURAL GRADE OUTDOOR WALL LUMINAIRE

### Housing

Diameter : Ø4" | Height : 9.5" | Weight : 9.2 lbs

### Material

Housing: High Pressure Die-Cast Aluminum

Lens: Tempered Glass

### Power Input

Downlight: 10W, 15W | 120-277V

Uplight: 10W, 15W | 120-277V

### Lumen Output

Downlight: 730 lm (10W), 1,080 lm (15W)

Uplight: 730 lm (10W), 1,080 lm (15W)

### Dimming

Standard 0-10V: Dims to 10%

Superior 0-10V: Dims to 1%

TRC: Linear line-voltage phase control, dims to 1%

### Color Quality

CRI 85, CRI 93

### Rated Life

> 100,000 Hours (L70)

### Finish



Black



White



Gray



Bronze

### Color Temperature



2700K



3000K



3500K



4000K

### Optics



15°



30°



45°



60°



Wide

### Warranty

5 Year limited warranty

### Listing



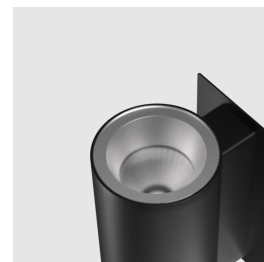
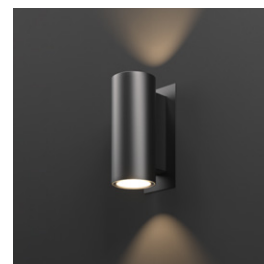
IP65

## SPECIFICATION SHEET WHITE UP / DOWN

## Designed for Timeless Exteriors

The Lance 4 is a high-performing range of architectural outdoor wall mounted luminaires, that delivers up to 2,160 lumens combined.

It's the perfect balance between decorative and functional, allowing you to graze brilliant surfaces and textures to make a bold after-dark statement.



# METEOR

[meteor-lighting.com](https://meteor-lighting.com)

**SPECIFICATION**

PROJECT NAME

DATE

CATALOG #

QUANTITY

The product configurator function on this page works only with the latest version of Chrome or Adobe Acrobat Reader.

<b>LA4</b>	<b>MODEL</b>	<b>LANCE 4</b>		
	<b>WATTAGE</b>	<b>20</b> Downlight: 10W Uplight: 10W	<b>30</b> Downlight: 15W Uplight: 15W	
	<b>CCT / CRI</b>	<b>278</b> 2700K / CRI 85 <b>309</b> 3000K / CRI 93 <b>408</b> 4000K / CRI 85	<b>279</b> 2700K / CRI 93 <b>358</b> 3500K / CRI 85	<b>308</b> 3000K / CRI 85 <b>359</b> 3500K / CRI 93
<b>UNV</b>	<b>VOLTAGE</b>	<b>UNV</b> 120 – 277V		
	<b>DIMMING</b>	<b>NOD</b> Non-Dimming <b>TRC<sup>1</sup></b> Linear line-voltage phase control, dims to 1%	<b>STV</b> Standard 0-10V dims to 10%	<b>SPV</b> Superior 0-10V dims to 1%
	<b>BEAM ANGLE</b>	<b>Downlight</b> <b>15</b> 15° <b>30</b> 30° <b>45</b> 45° <b>60</b> 60° <b>WD<sup>2</sup></b> Wide		
	<b>BEAM ANGLE</b>	<b>Uplight</b> <b>15</b> 15° <b>30</b> 30° <b>45</b> 45° <b>60</b> 60° <b>WD<sup>2</sup></b> Wide		
	<b>FINISH</b>	<b>BLK</b> Black <b>BRZ</b> Bronze	<b>WHT<sup>3</sup></b> White	<b>GRY</b> Gray
	<b>ACCESSORIES</b>	<b>WW<sup>4</sup></b> Wall Wash 20° <b>SL<sup>5</sup></b> Solite Lens	<b>LL<sup>4</sup></b> Linear Lens	<b>FW<sup>4</sup></b> Forward Throw
	<b>RATING</b>	<b>OUT<sup>6</sup></b> Outdoor Rating	<b>NAT<sup>7</sup></b> Natatorium Rated	<b>MAR<sup>8</sup></b> Marine Rating

<sup>1</sup> Option is only compatible with 120V

<sup>2</sup> Please factor in change in lumen output of -12% with WD

<sup>3</sup> Option is not compatible with Marine Rating

<sup>4</sup> Option only available with 30° Beam Angle. Please factor in change in lumen output of -20%

<sup>5</sup> Please factor in change in lumen output of -12%

<sup>6</sup> Outdoor Rating: Coating and wiring will be changed to high UV resistant and corrosion resistant materials for long-term operation in outdoor environments

<sup>7</sup> Natatorium Rating: Coating and sealant will be changed to high corrosion resistant materials to prevent damage from long-term exposure to chlorine vapors.

<sup>8</sup> Marine Rating: Uses high corrosion-resistant materials for the coating and sealant to prevent damage from long-term exposure to saltwater environment.

**TECHNICAL DETAILS****Electrical**

- Downlight: 730 lm (10W), 1,080 lm (15W)
- Uplight: 730 lm (10W), 1,080 lm (15W)
- Power Input: Universal (120/277V)
- Operating Temperature: 14°F~104°F
- Surge Protection: Built-in is 2.5KV
- Power Factor Greater than 0.9

**LED Features**

- Color Temperature: 2700K, 3000K, 3500K, 4000K
- CRI 85, CRI 93
- Long lasting LED luminaire tested under TM21 lumen maintenance L70 @ 100,000 Hrs

**Optics**

- Precision molded high transmittance clear PC lens
- Beam Angle Up & Down: 15°, 30°, 45°, 60°, Wide

**Advanced Dimming**

- Proprietary VX Driver™ is incorporated to all dimming options for video flicker-free lighting
- Standard 0-10V: Dims to 10%
- Superior 0-10V: Dim to 1 %
- TRC: Linear line-voltage phase control, dims to 1%

**Housing**

- Diameter: Ø4"
- Height: 9.5"
- Material: High Pressure Die-Cast Aluminum, Tempered Glass
- Weight: 9.2 lbs

**Warranty**

- 5-year limited warranty

**Listing**

- ETL Wet Location Listed
- CE
- FCC
- IP 65

**PERFORMANCE SUMMARY\***

Delivered Lumens				
CCT/WATTAGE	2700K	3000K	3500K	4000K
<b>20W</b> UP & DOWN (10W)	660lm	685lm	710lm	730lm
<b>30W</b> UP & DOWN (15W)	970lm	1,020lm	1,050lm	1,080lm

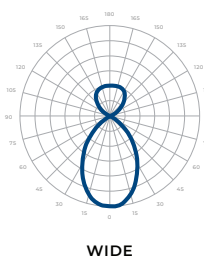
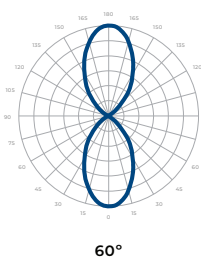
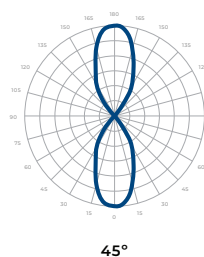
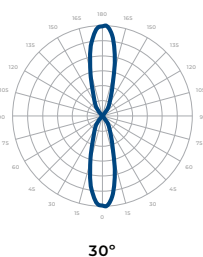
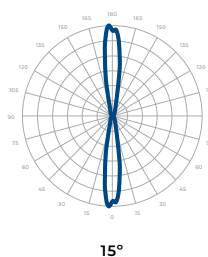
Current Consumption		
WATTAGE / VOLT	120V	277V
<b>20W</b>	0.2A	0.09A
<b>30W</b>	0.3A	0.13A

\* Tolerance ±8%

\*For specifications requiring a CRI of 93, apply a 0.8 multiplier to the lumen output values listed.

**PHOTOMETRICS**

Below is a typical photometric representation of the Lance 4 fixture. Please download IES files to ensure exact photometric value.



## DIMENSIONS

