

LANCE 4

ARCHITECTURAL GRADE OUTDOOR WALL LUMINAIRE

Housing

Diameter : Ø4" | Height : 9.5" | Weight : 9.2 lbs

Material

Housing : High Pressure Die-Cast Aluminum

Lens : Tempered Glass

Power Input

Downlight : 10W, 15W | 120-277V

Uplight : 10W, 15W | 120-277V

Lumen Output

Downlight : 730 lm (10W), 1,080 lm (15W)

Uplight : 730 lm (10W), 1,080 lm (15W)

Dimming

Standard 0-10V : Dims to 10%

Superior 0-10V : Dims to 1%

TRC : Linear line-voltage phase control, dims to 1%

Color Quality

CRI 85, CRI 93

Rated Life

> 100,000 Hours (L70)

Finish



Black



White



Gray



Bronze

Color Temperature



2700K



3000K



3500K



4000K

Optics



15°



30°



45°



60°



Wide

Warranty

5 Year limited warranty

Listing

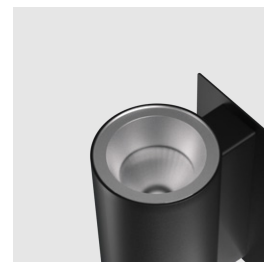
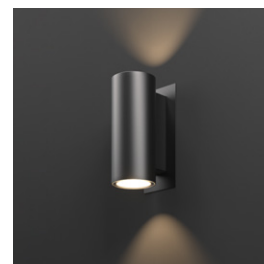


SPECIFICATION SHEET WHITE UP / DOWN

Designed for Timeless Exteriors

The Lance 4 is a high-performing range of architectural outdoor wall mounted luminaires, that delivers up to 2,160 lumens combined.

It's the perfect balance between decorative and functional, allowing you to graze brilliant surfaces and textures to make a bold after-dark statement.



METEOR

meteor-lighting.com

SPECIFICATION

PROJECT NAME

DATE

CATALOG #

QUANTITY

The product configurator function on this page works only with the latest version of Chrome or Adobe Acrobat Reader.

LA4	MODEL	LANCE 4		
	WATTAGE	20 Downlight: 10W Uplight: 10W	30 Downlight: 15W Uplight: 15W	
	CCT / CRI	278 2700K / CRI 85 309 3000K / CRI 93 408 4000K / CRI 85	279 2700K / CRI 93 358 3500K / CRI 85	308 3000K / CRI 85 359 3500K / CRI 93
UNV	VOLTAGE	UNV 120 – 277V		
	DIMMING	NOD Non-Dimming TRC¹ Linear line-voltage phase control, dims to 1%	STV Standard 0-10V dims to 10%	SPV Superior 0-10V dims to 1%
	BEAM ANGLE	Downlight 15 15° 30 30° 45 45° 60 60° WD² Wide		
	BEAM ANGLE	Uplight 15 15° 30 30° 45 45° 60 60° WD² Wide		
	FINISH	BLK Black BRZ Bronze	WHT³ White	GRY Gray
	ACCESSORIES	WW⁴ Wall Wash 20° SL⁵ Solite Lens	LL⁴ Linear Lens	FW⁴ Forward Throw
	RATING	OUT⁶ Outdoor Rating	NAT⁷ Natatorium Rated	MAR⁸ Marine Rating

¹ TRC is only compatible with 120V

² WD option reduces delivered lumens by ~12%

³ WHT is not compatible with MAR

⁴ FW/WW/LL options reduces delivered lumens by ~20%, and is only compatible with 30°

⁵ SL option reduces delivered lumens by ~12%

⁶ Outdoor Rating: Coating and wiring will be changed to high UV resistant and corrosion resistant materials for long-term operation in outdoor environments

⁷ Natatorium Rating: Coating and sealant will be changed to high corrosion resistant materials to prevent damage from long-term exposure to chlorine vapors

⁸ Marine Rating: Uses high corrosion-resistant materials for the coating and sealant to prevent damage from long-term exposure to saltwater environment

TECHNICAL DETAILS**Electrical**

- Downlight : 730 lm (10W), 1,080 lm (15W)
- Uplight : 730 lm (10W), 1,080 lm (15W)
- Power Input : Universal (120/277V)
- Operating Temperature : 14°F~104°F
- Surge Protection : Built-in is 2.5KV
- Power Factor Greater than 0.9

LED Features

- Color Temperature : 2700K, 3000K, 3500K, 4000K
- CRI 85, CRI 93
- Long lasting LED luminaire tested under TM21 lumen maintenance L70 @ 100,000 Hrs

Optics

- Precision molded high transmittance clear PC lens
- Beam Angle Up & Down : 15°, 30°, 45°, 60°, Wide

Advanced Dimming

- Proprietary VX Driver™ is incorporated to all dimming options for video flicker-free lighting
- Standard 0-10V : Dims to 10%
- Superior 0-10V : Dim to 1%
- TRC : Linear line-voltage phase control, dims to 1%

Housing

- Diameter : Ø4"
- Height : 9.5"
- Material : High Pressure Die-Cast Aluminum, Tempered Glass
- Weight : 9.2 lbs

Warranty

- 5-year limited warranty

Listing

- ETL Wet Location Listed
- CE
- FCC
- IP 65

PERFORMANCE SUMMARY*

	Delivered Lumens			
CCT/WATTAGE	2700K	3000K	3500K	4000K
20W UP & DOWN (10W)	660lm	685lm	710lm	730lm
30W UP & DOWN (15W)	970lm	1,020lm	1,050lm	1,080lm

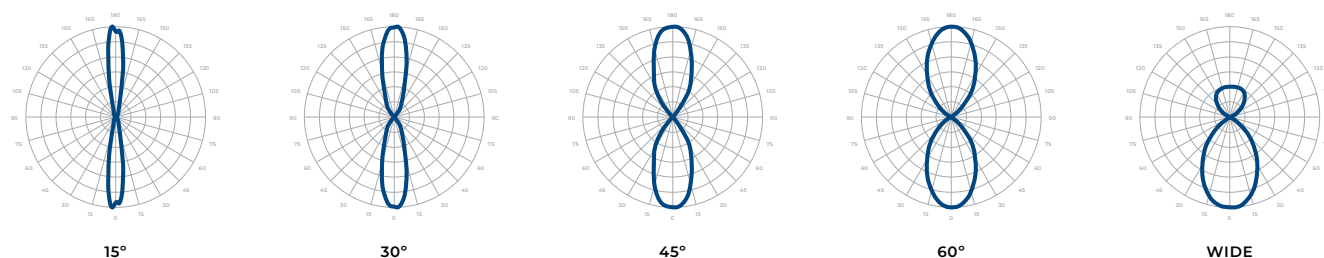
	Current Consumption	
WATTAGE / VOLT	120V	277V
20W	0.2A	0.09A
30W	0.3A	0.13A

*Tolerance ±8%

*For specifications requiring a CRI of 93, apply a 0.8 multiplier to the lumen output values listed.

PHOTOMETRICS

Below is a typical photometric representation of the Lance 4 fixture. Please download IES files to ensure exact photometric value.



DIMENSIONS

