

REV HYDRO 4 & 6

INSTALLATION GUIDE
ADJUSTABLE CABLE

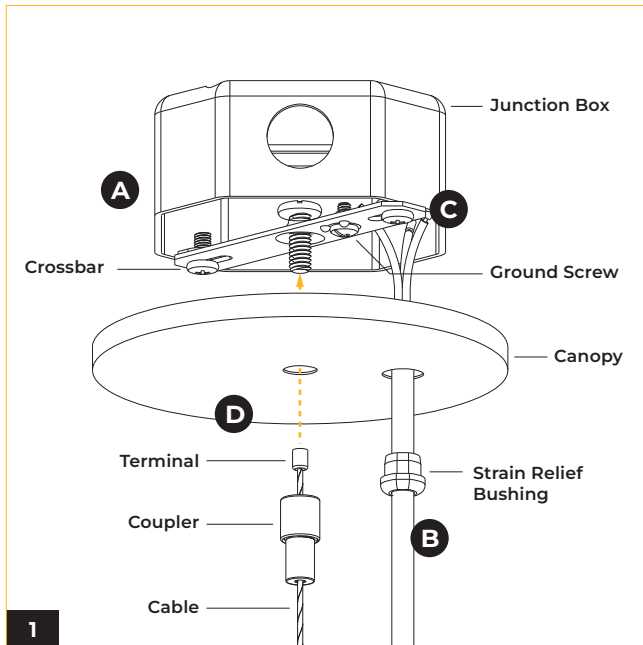


IMPORTANT SAFETY INFORMATION READ AND FOLLOW ALL SAFETY INSTRUCTIONS

**FOR FIELD ASSISTANCE PLEASE CALL
+1-213-255-2060 #4**

- Before wiring to power supply and during servicing or relamping, turn off power at fuse or circuit breaker.
- All servicing or relamping must be performed by qualified service personnel.
- Product must be grounded to avoid potential electric shock or other potential hazard.
- Product must be installed at locations and heights, in a manner consistent with its intended use, and in compliance with electrical code and local codes.

SAVE THESE INSTRUCTIONS FOR FUTURE REFERENCE



(A) Secure the crossbar to the junction box (not included) designed to support the weight of the fixture.

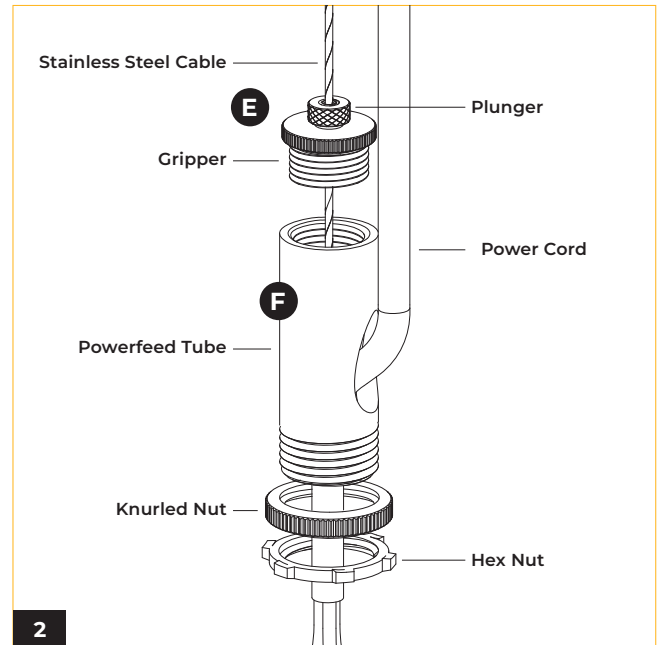
(B) Lock the strain relief bushing to the power cord with allowance for wiring connections, and thread the power cord through the canopy wire hole.

(C) Connect the Green ground conductor to the ground screw on the crossbar, the line voltage to the Black conductor, and the neutral to the White conductor.

For 0-10V dimming option, connect the two remaining conductors according to the wiring diagram.

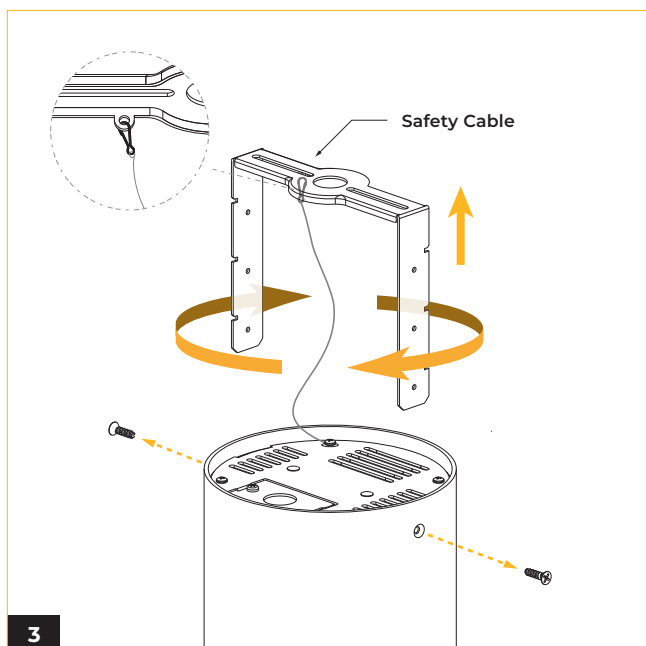
* Make all connections with UL approved connectors.

(D) Thread the cable through the coupler with the terminal side on top. Slide the coupler up to the canopy and secure with the screw on crossbar.

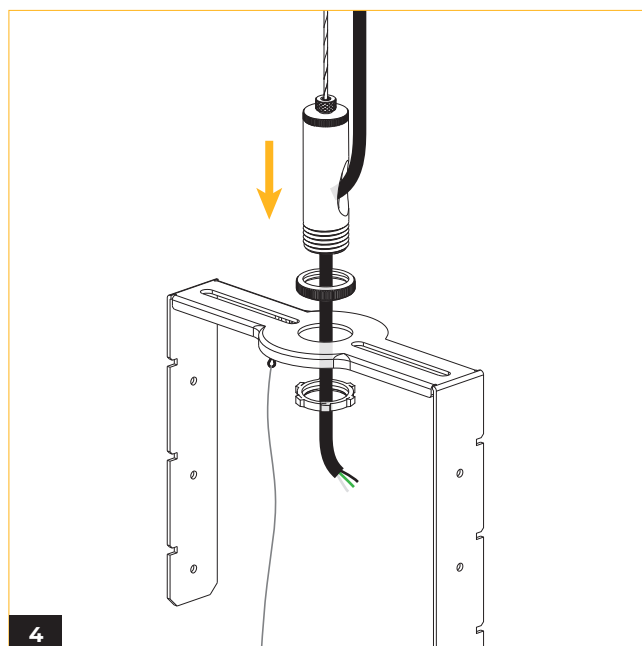


(E) Insert the cable through the gripper and plunger. Trim off extra cable using cable cutting tool. To adjust the cable to desired length, press the plunger.

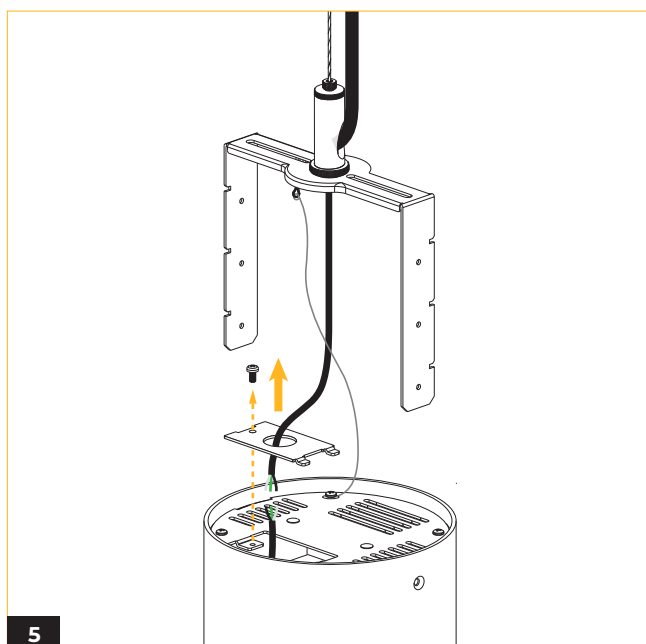
(F) Secure gripper with powerfeed tube, then feed cord through powerfeed tube.



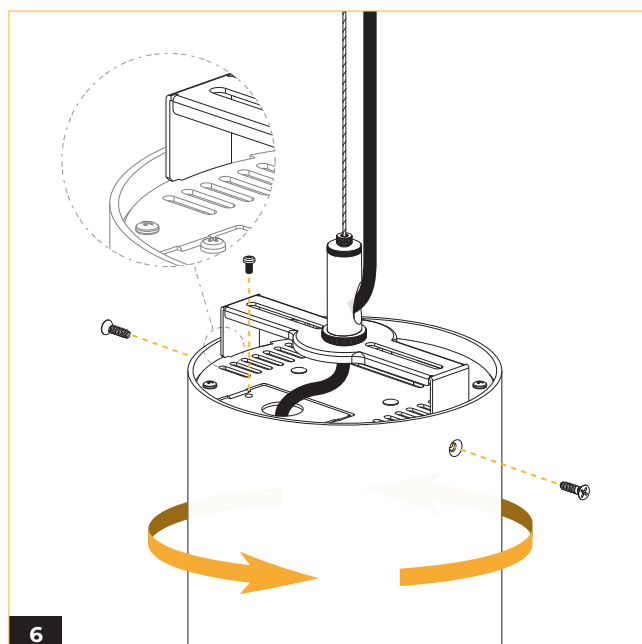
3 Remove the bracket by unscrewing the two screws on each side of the fixture, then twist it clockwise to detach.



4 Insert the power cord through the bracket, then slide the powerfeed tube through the bracket and secure it by tightening the nuts on both sides.



5 Remove the power feed lid to expose the power cord, route the wiring from the power source through the lid, and make electrical connections as shown in the wiring diagram.

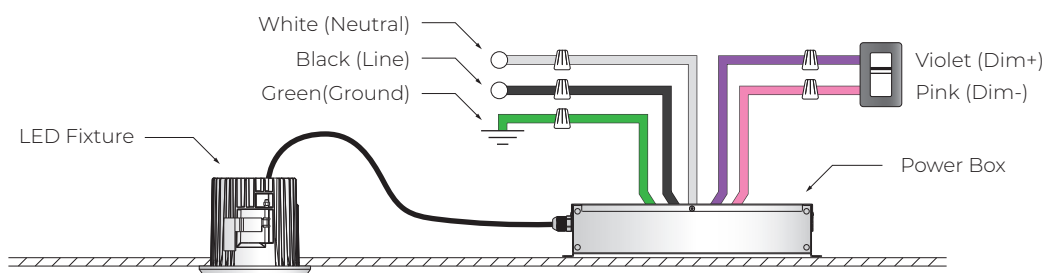


6 Install the fixture onto the bracket by aligning the slots, twisting the fixture counterclockwise until locked, and securing it with two screws on each side.

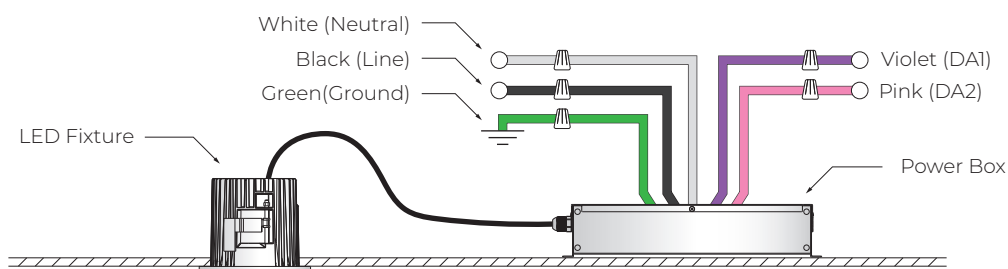
WIRING DIAGRAM

STV

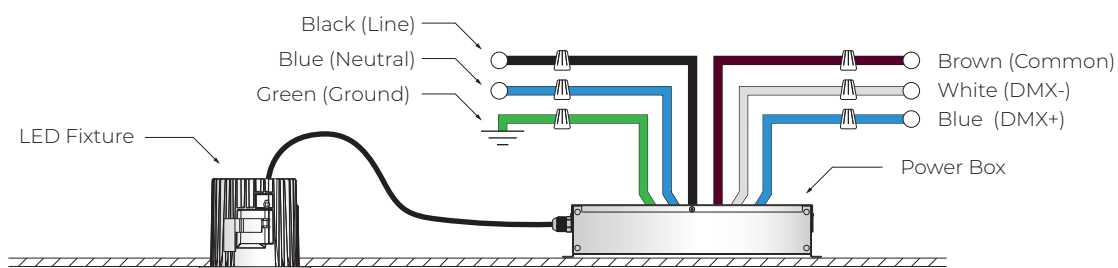
*Not to scale



DALI



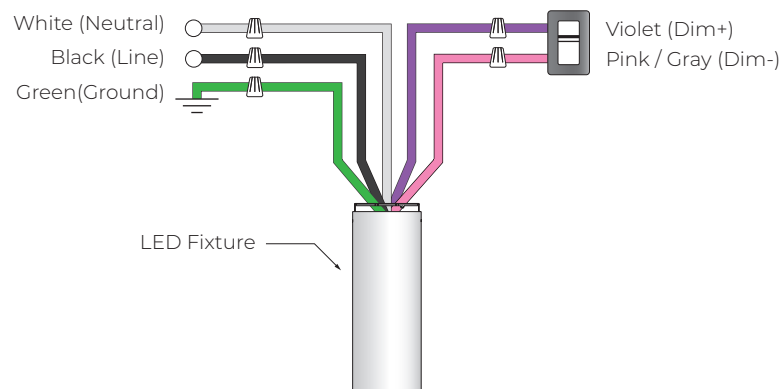
DMX (W+RGB)



WIRING DIAGRAM

STV

*Not to scale



DALI

