

# REV HYDRO 4 & 6

INSTALLATION GUIDE  
STEM MOUNT



## **IMPORTANT SAFETY INFORMATION** READ AND FOLLOW ALL SAFETY INSTRUCTIONS

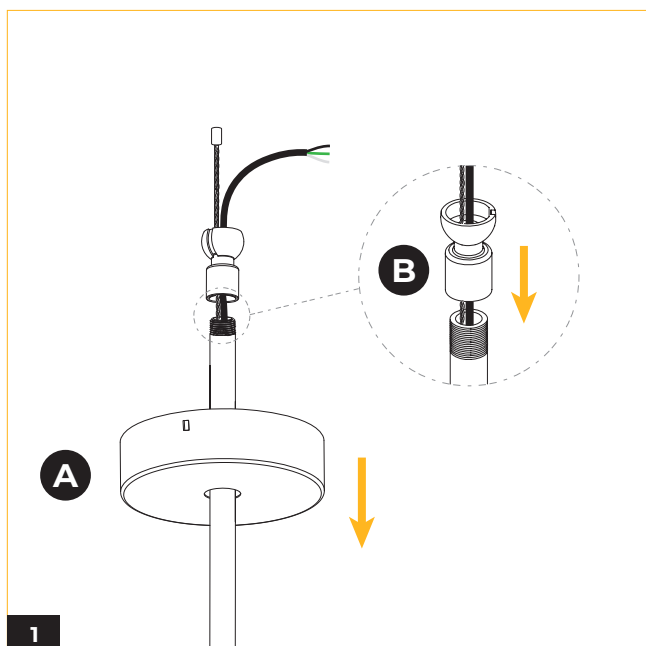
---

**FOR FIELD ASSISTANCE PLEASE CALL  
+1-213-255-2060 #4**

---

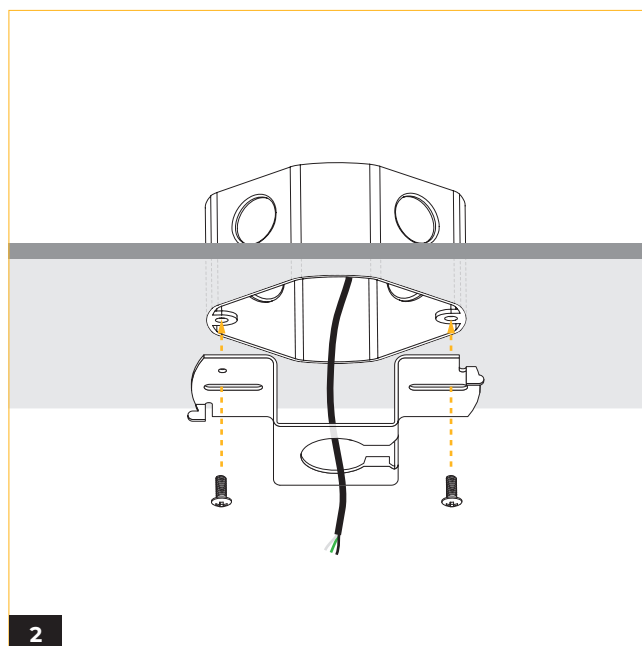
- Before wiring to power supply and during servicing or relamping, turn off power at fuse or circuit breaker.
- All servicing or relamping must be performed by qualified service personnel.
- Product must be grounded to avoid potential electric shock or other potential hazard.
- Product must be installed at locations and heights, in a manner consistent with its intended use, and in compliance with electrical code and local codes.

**SAVE THESE INSTRUCTIONS FOR FUTURE REFERENCE**

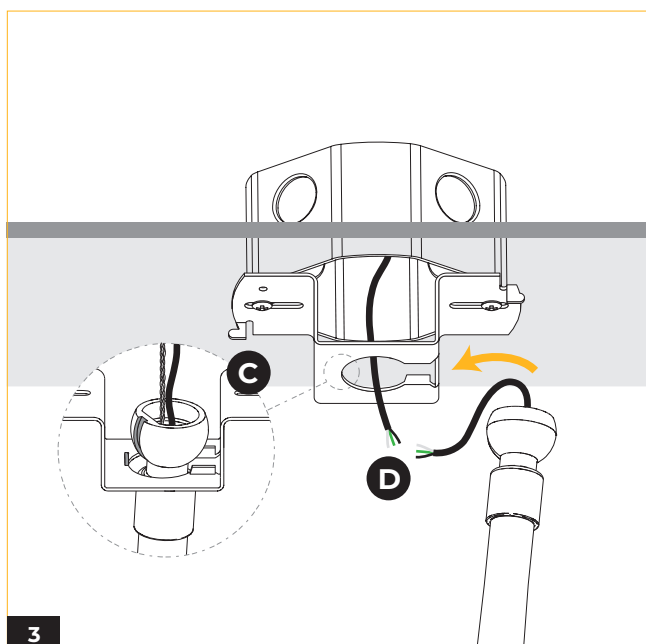


**(A)** Feed the canopy through the stem.

**(B)** Secure half ball with stem.

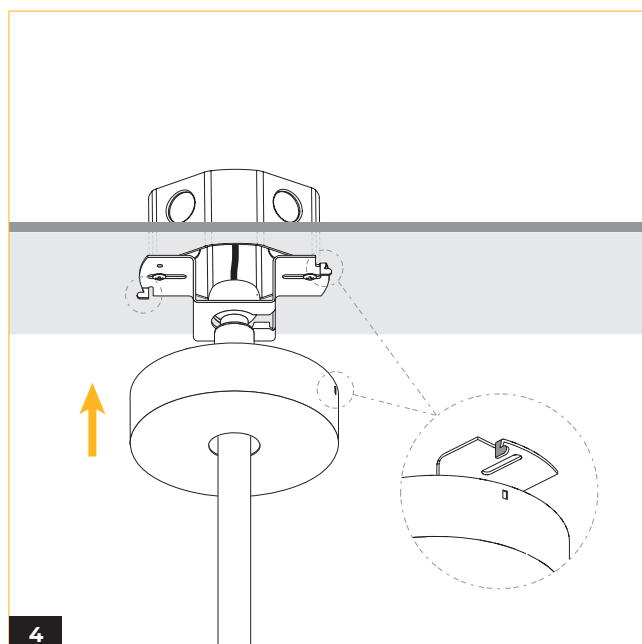


Attach swivel crossbar to junction box (not included) with two screws.

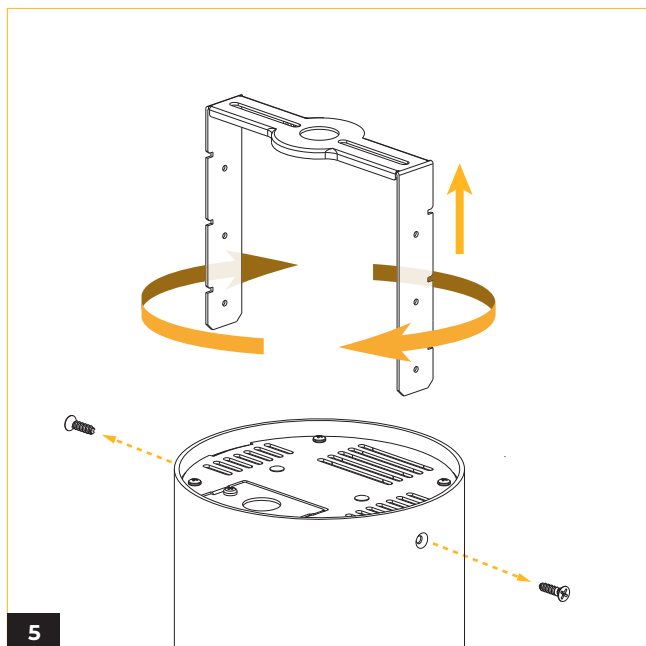


**(C)** Insert half ball joint into slot on swivel crossbar. Align the slot on ball joint with the tab on the swivel crossbar.

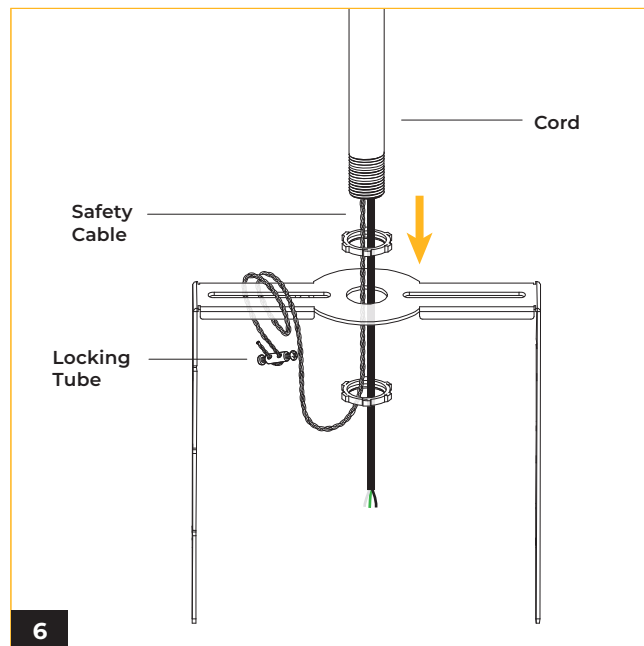
**(D)** Establish electrical and safety cable connections between the junction box and the fixture. (Refer to wiring diagram)



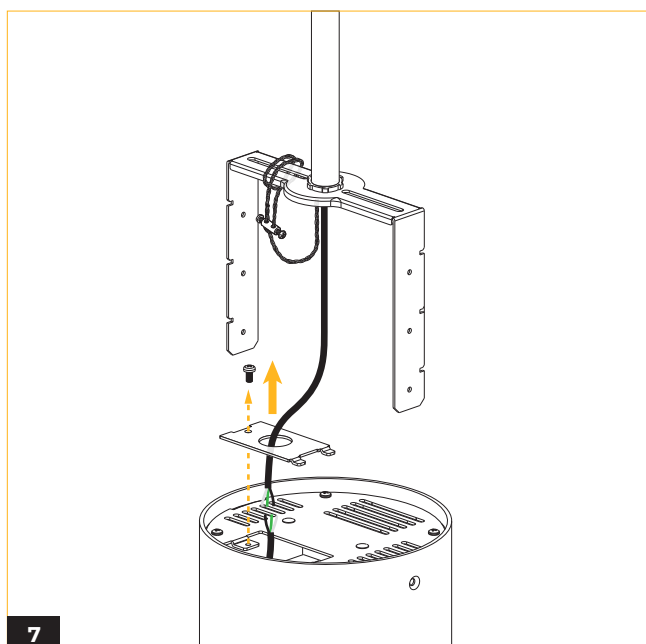
Install canopy cover by aligning the tabs on crossbar with slots in the cover.



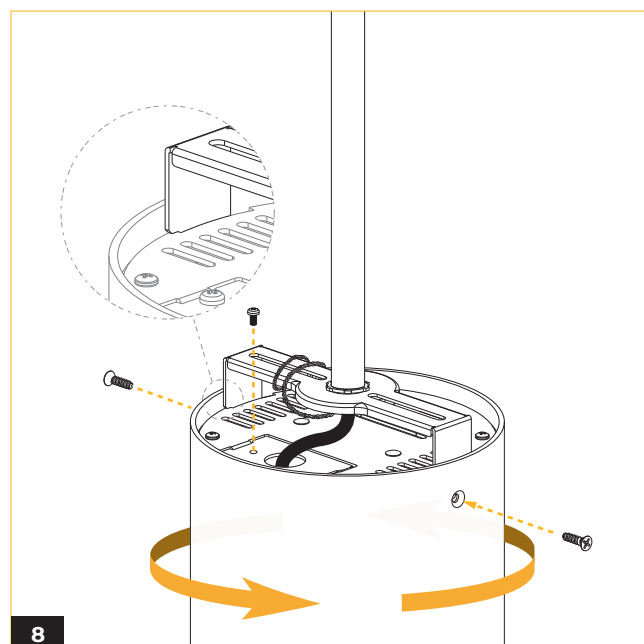
Remove the bracket by unscrewing the two screws on each side of the fixture, then twist it clockwise to detach.



Insert the safety cable and wiring through the stem, then slide the stem through the bracket and secure it by tightening the nuts on both sides. Loop the safety cable around the bracket, secure it with the locking tube, and tighten the screws to hold it in place.



Remove the power feed lid to expose the power cord, route the wiring from the power source through the lid, and make electrical connections as shown in the wiring diagram.

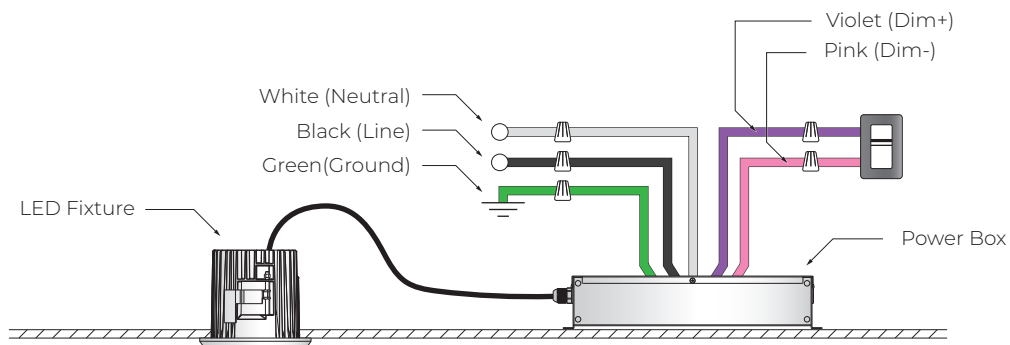


Install the fixture onto the bracket by aligning the slots, twisting the fixture counterclockwise until locked, and securing it with two screws on each side.

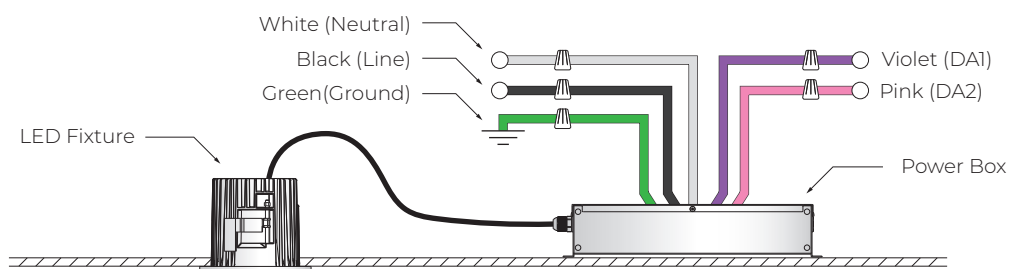
## WIRING DIAGRAM

STV

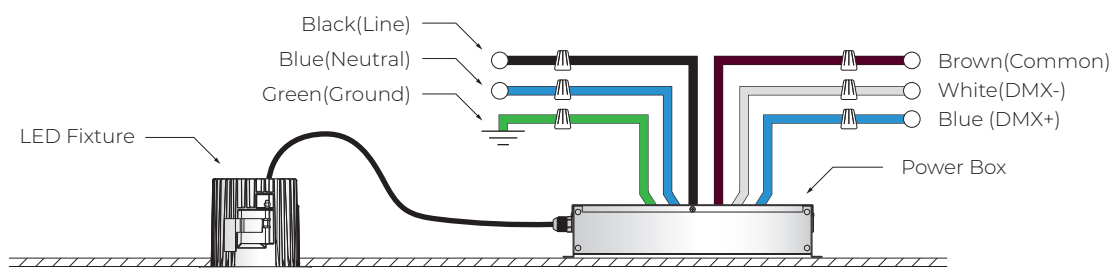
\*Not to scale



DALI



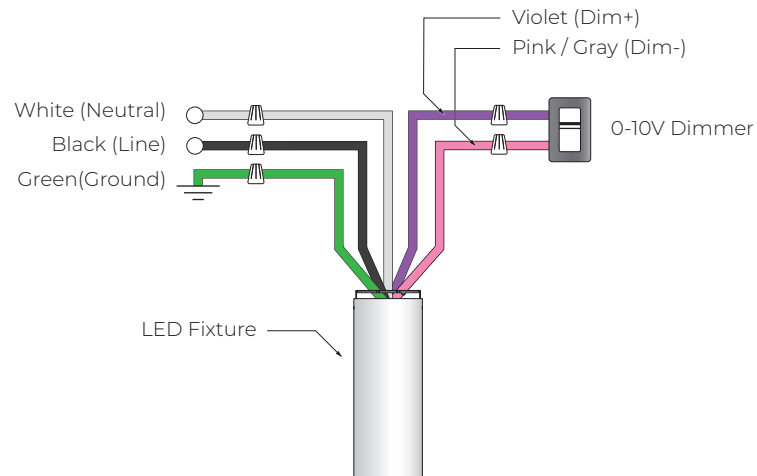
DMX (W+RGB)



## WIRING DIAGRAM

### STV

\*Not to scale



### DALI

