

REV HYDRO 4 & 6

INSTALLATION GUIDE
SURFACE MOUNT



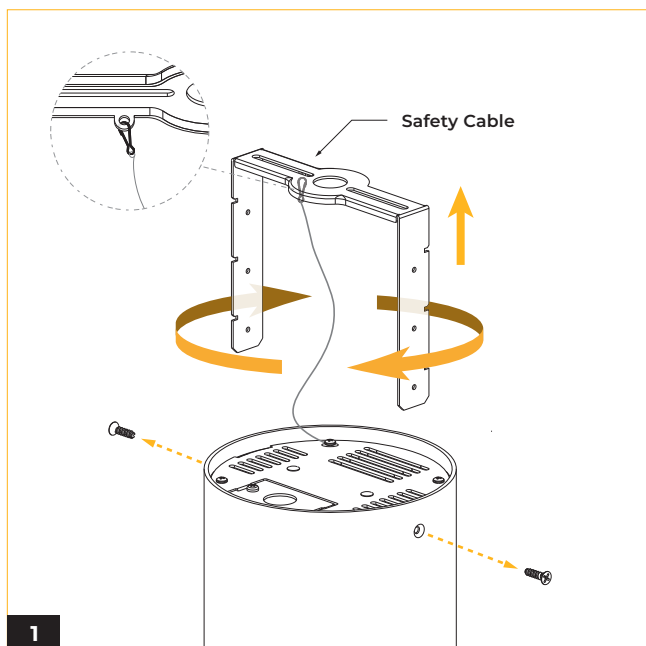
IMPORTANT SAFETY INFORMATION

READ AND FOLLOW ALL SAFETY INSTRUCTIONS

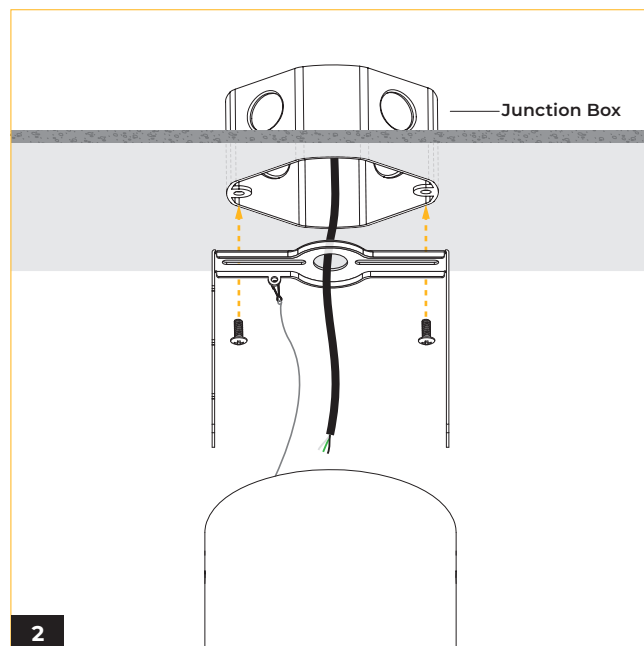
**FOR FIELD ASSISTANCE PLEASE CALL
+1-213-255-2060 #4**

- Before wiring to power supply and during servicing or relamping, turn off power at fuse or circuit breaker.
- All servicing or relamping must be performed by qualified service personnel.
- Product must be grounded to avoid potential electric shock or other potential hazard.
- Product must be installed at locations and heights, in a manner consistent with its intended use, and in compliance with electrical code and local codes.

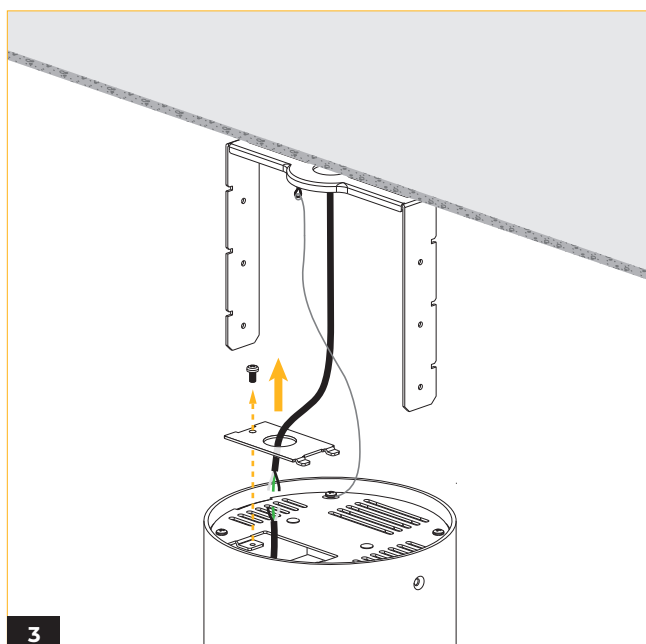
SAVE THESE INSTRUCTIONS FOR FUTURE REFERENCE



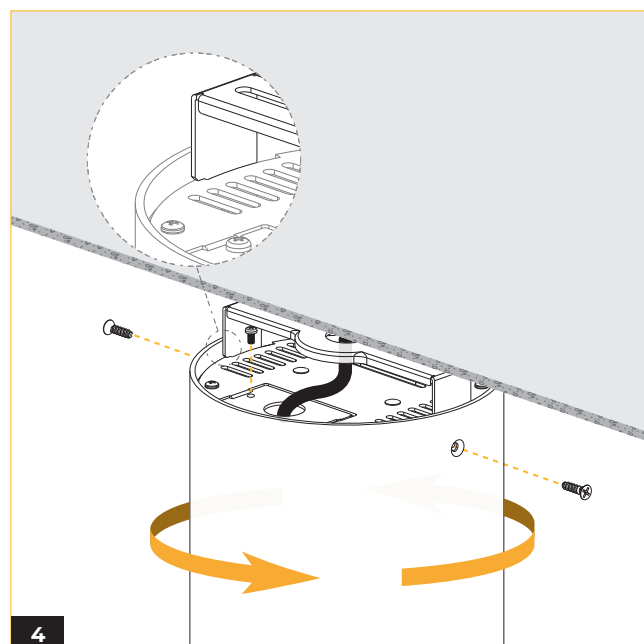
1 Remove the bracket by unscrewing the two screws on each side of the fixture, then twist it clockwise to detach.



2 Mount the bracket to the desired location and secure it to the junction box (not included) using appropriate hardware.



3 Remove the power feed lid to expose the power cord, route the wiring from the power source through the lid, and make electrical connections as shown in the wiring diagram.

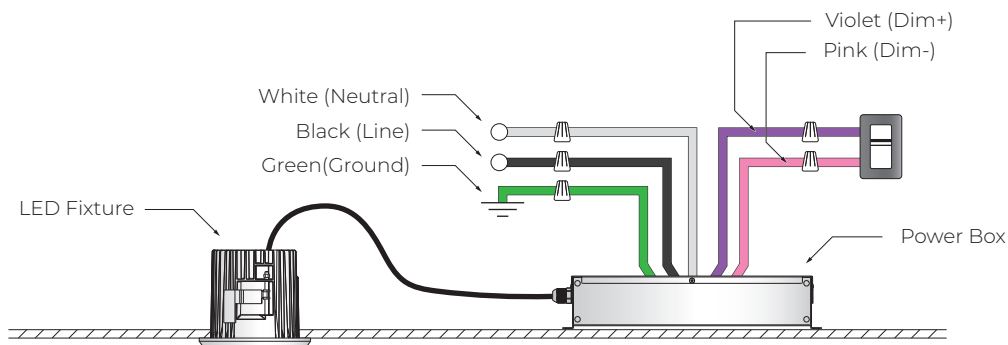


4 Install the fixture onto the bracket by aligning the slots, twisting the fixture counterclockwise until locked, and securing it with two screws on each side.

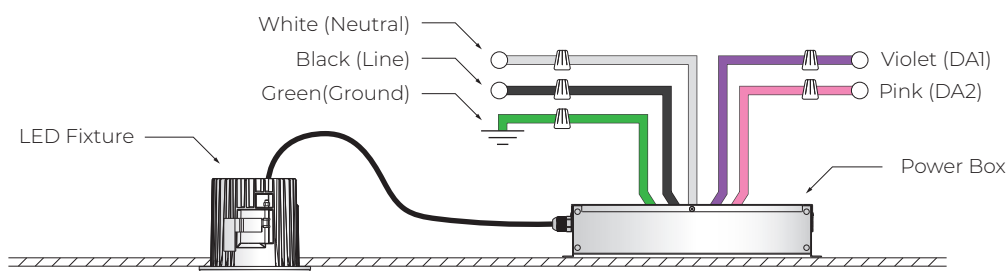
WIRING DIAGRAM

STV

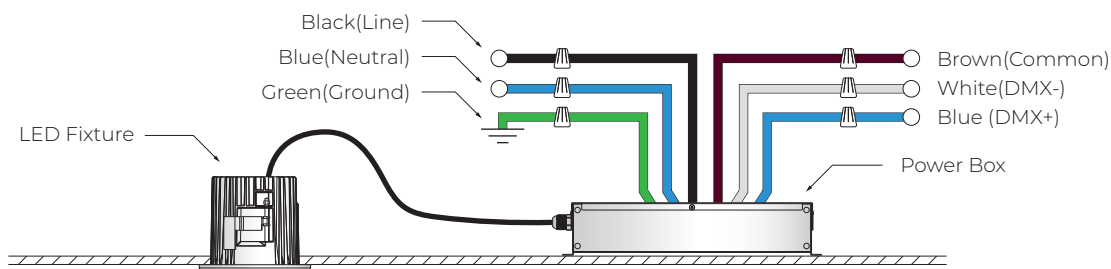
*Not to scale



DALI



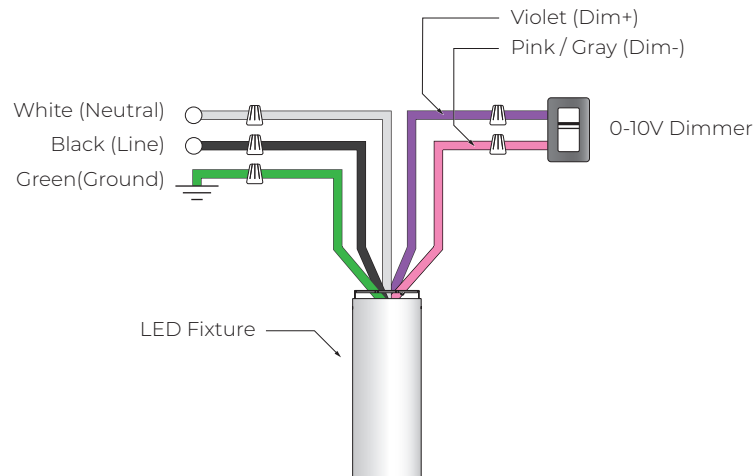
DMX (W+RGB)



WIRING DIAGRAM

STV

*Not to scale



DALI

