

# REV HYDRO 6

SPECIFICATION SHEET  
CYLINDER CONVERSION KIT

## HIGH LUMEN RECESSED DOWNLIGHT WITH WATERPROOF DESIGN

### Housing

Aperture : Ø7"

Height : 14.9" | Weight : 7.7 lbs

### Material

Housing : Die Cast Aluminum

Lens : PC

Trim: Flow Forming Aluminum

### Power Input

50W, 70W | 120V, 277V

### Lumen Output

4,400 lm (50W), 5,760 lm (70W)

### Dimming

Standard 0-10V : Dims to 10%

DALI : Dims to 10%

### Color Quality

CRI 85

### Rated Life

> 60,000 Hours (L70)

### Trim Finish



Black



Gray



Bronze

### Color Temperature



2700K



3000K



3500K



4000K



5000K

### Optics



30°



45°



55°

### Warranty

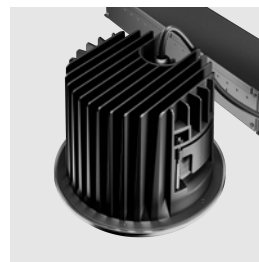
5 Year limited warranty

### Listing



## Durable Design, Compact Brilliance.

The REV Hydro, now specified in a cylinder form factor, seamlessly integrates an IP65-rated driver within its cylindrical body to preserve waterproof integrity. This configuration offers versatile mounting options, including a stem or adjustable cable, allowing for flexibility in design while maintaining the fixture's performance and timeless aesthetic.



# METEOR

[meteor-lighting.com](https://meteor-lighting.com)

## SPECIFICATION

PROJECT NAME

DATE

CATALOG #

QUANTITY

<input type="text" value="RH6C"/>	MODEL	REV HYDRO 6 CYLINDER		
<input type="text"/>	WATTAGE	50 50W	70 70W	
<input type="text"/>	CCT / CRI	278 2700K / CRI 85 408 4000K / CRI 85	308 3000K / CRI 85 508 5000K / CRI 85	358 3500K / CRI 85
<input type="text"/>	VOLTAGE	120 120V	277 277V	
<input type="text"/>	DIMMING	STV Standard 0-10V dims to 10%	DALI DALI dims to 10%	
<input type="text"/>	BEAM ANGLE	30 30°	45 45°	55 55°
<input type="text"/>	TRIM FINISH <sup>1</sup>	BLK Black	GRY Gray	BRZ Bronze
<input type="text"/>	MOUNTING	SUM Surface Mount AD10 Adjustable Cable 10ft	ST2 Stem 2ft SAD10 Sloped Adjustable Cable 10ft	ST4 Stem 4ft
<input type="text"/>	RATING	OUT <sup>2</sup> Outdoor Rating	NAT <sup>3</sup> Natatorium Rating	MAR <sup>4</sup> Marine Rating

<sup>1</sup> The trim includes a gasket seal to prevent water ingress from below.<sup>2</sup> Outdoor Rating: Coating and wiring will be changed to high UV resistant and corrosion resistant materials for long-term operation in outdoor environments<sup>3</sup> Natatorium Rating: Utilizes high corrosion-resistant materials for both coatings and sealants to prevent damage from long-term exposure to chlorine vapors<sup>4</sup> Marine Rating: Utilizes high corrosion-resistant materials for both coatings and sealants to prevent damage from long-term exposure to saltwater environments[↺ CLEAR FORM](#)

## TECHNICAL DETAILS

## Electrical

- 4,400 lm (50W), 5,760 lm (70W)
- Power Input: 120V or 277V
- Operating Temperature -20°F~104°F
- Surge Protection: Built-in is 4KV
- Power Factor Greater than 0.9

## LED Features

- Color Temperature : 2700K, 3000K, 3500K, 4000K, 5000K
- CRI 85
- Long lasting LED luminaire tested under TM21 lumen maintenance L70 @ 60,000 Hrs

## Optics

- PC Lens
- Beam Angle : 30°, 45°, 55°

## Advanced Dimming

- Standard 0-10V : Dims to 10%
- DALI : Dims to 10%

## Retrofit Housing

- Aperture : Ø7"
- Height : 14.9"
- Weight : 7.7 lbs
- Material : Die Cast Aluminum, PC, Flow Forming Aluminum

## Mounting

- Surface Mount
- Stem 2ft or 4ft
- Adjustable Cable 10ft
- Sloped Adjustable Aircraft Cable 10ft

## Warranty

- 5-year limited warranty

## Listing

- ETL Wet Location Listed
- FCC
- UKCA
- IP 65

## PERFORMANCE SUMMARY\*

STD (Standard)					
CCT/ WATTAGE	2700K	3000K	3500K	4000K	5000K
50W	4,350lm	4,430lm	4,450lm	4,480lm	4,400lm
70W	5,700lm	5,800lm	5,850lm	5,860lm	5,760lm

Current Consumption		
WATTAGE / VOLT	120V	277V
30W	0.28A	0.12A
50W	0.46A	0.2A

\* Tolerance ±8%

CYLINDER CONVERSION KIT FINISH

Black Finish



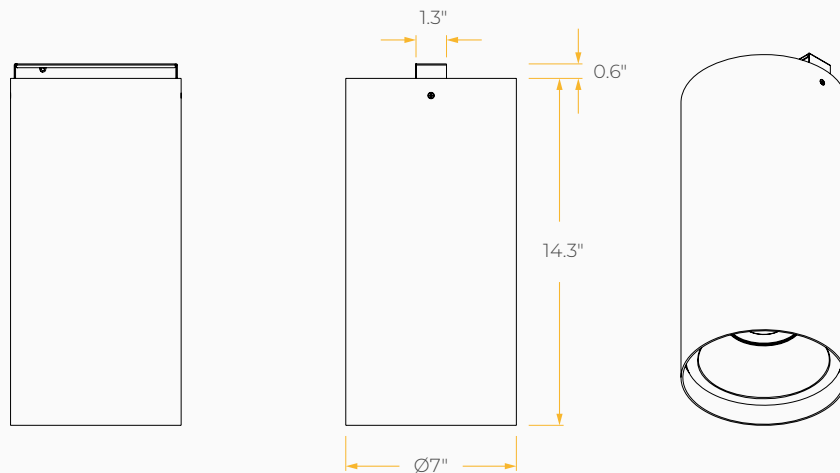
Gray Finish



Bronze Finish



DIMENSIONS



## MOUNTING OPTIONS\*

\*Junction box not included

